

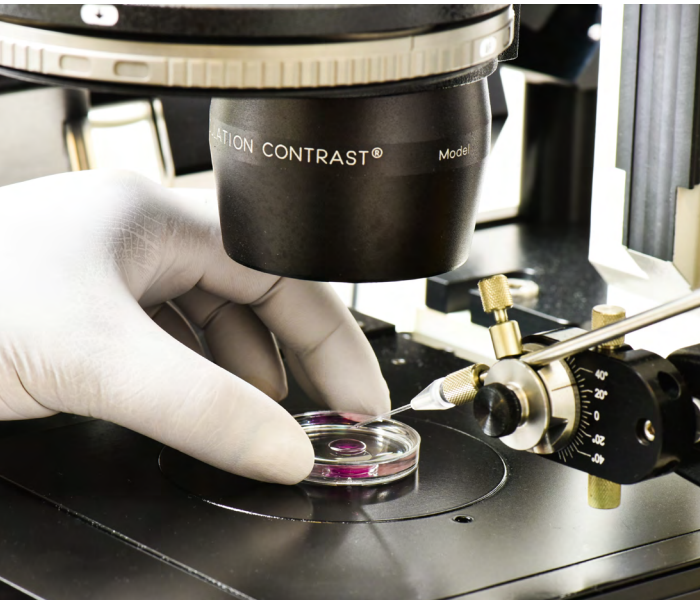
Education Department

CONTACT :

ppuRnT@pasteur.fr

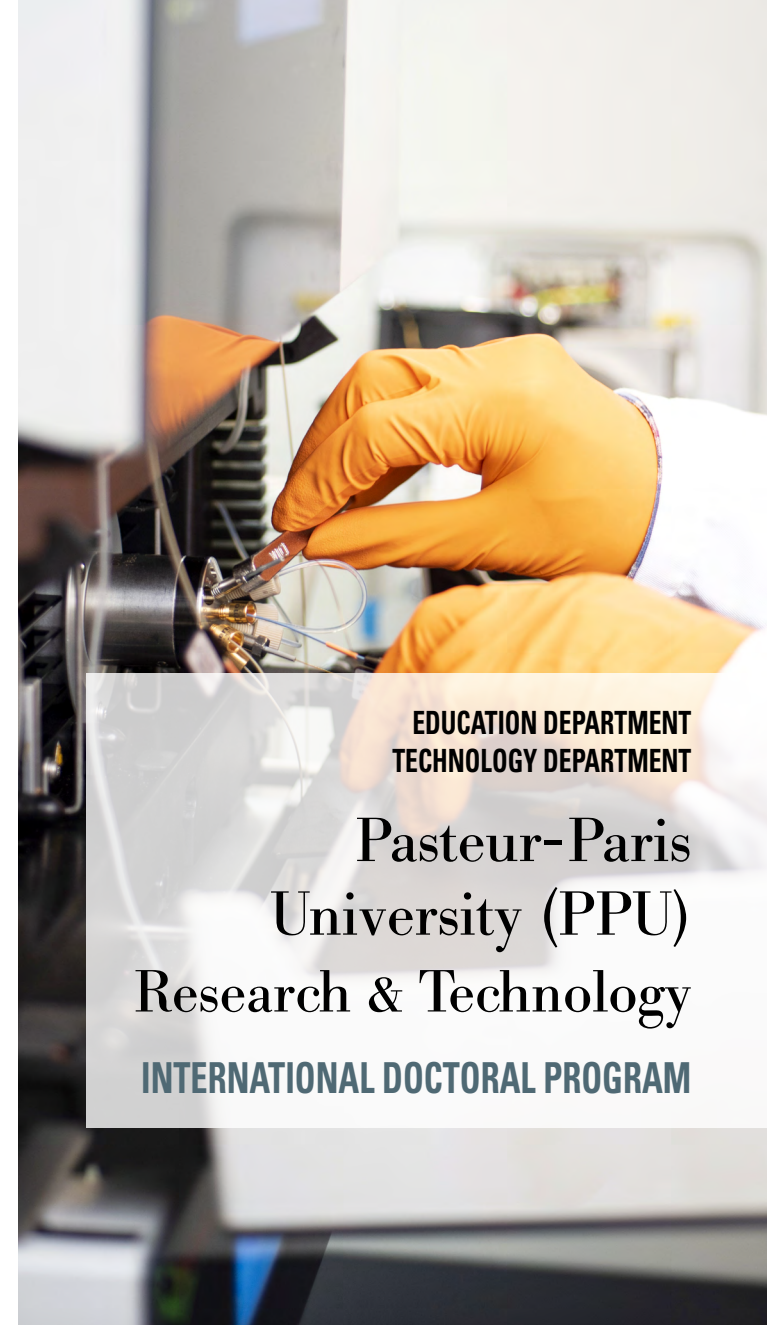
www.pasteur.fr/en/ppu/RT

Call for applications opens in September for the class starting in October of the following year.



The PPU-Research & Technology Program gives access to a stimulating technological environment to carry out PhD student's research project. This includes opportunities to conduct technological and methodological co-developments on high-end equipment under the supervision/in partnership with technology platforms or service and research units (UTechS). In addition, students of the PPU-Research & Technology Program will receive specific courses on soft skills, as Oral Presentation, Journal Club, Workshop on Ethics, French Lessons.

© Institut Pasteur. Communication interne et image



EDUCATION DEPARTMENT
TECHNOLOGY DEPARTMENT

Pasteur-Paris
University (PPU)
Research & Technology
INTERNATIONAL DOCTORAL PROGRAM



“Research & Technology” PPU-Program

CONTEXT OF THE PhD PROGRAM

Technology plays a crucial and ever-increasing role in scientific discoveries in the life sciences. Significant advances are often coupled to breakthroughs in technology. To permit a large number of research groups to benefit from the most advanced equipment and expertise, the Institut Pasteur has invested heavily into its technological platforms. By spending a large fraction of their projects in a technology platform, the students in this program will benefit from training on advanced equipment by highly experienced personnel, with a project that poses significant challenges both on the scientific and technological level.

10
NOBEL PRIZES *

144
RESEARCH UNITS *

UNIQUE MULTIDISCIPLINARY DOCTORAL TRAINING

- Selected students will be co-supervised by a scientist and a technology expert.
- They will be able to access a stimulating scientific and technological environment and develop their skills both in life sciences research and in technology development.
- Academic and professional development training is provided through the PPU program
- Students will be supported by a Thesis Advisory Committee
- Students will participate in the PPU retreat, annually
- Students will have the opportunity to prepare for a career in academia as well as alternative ones (industry, technology platforms, large research infrastructures, ...).

74
NATIONALITIES *

300
PhD STUDENTS ON
THE CAMPUS *

* Institut Pasteur key numbers

AIMS OF THE PROGRAM

This program will foster scientific projects involving the development of a new technology or methodology to answer a biological question with impact on human health.

STUDENT BENEFITS

- A three-year salary and social benefits
- An annual travel grant for international scientific workshops and meetings
- Administrative support and housing assistance
- Comprehensive academic and professional skills training

